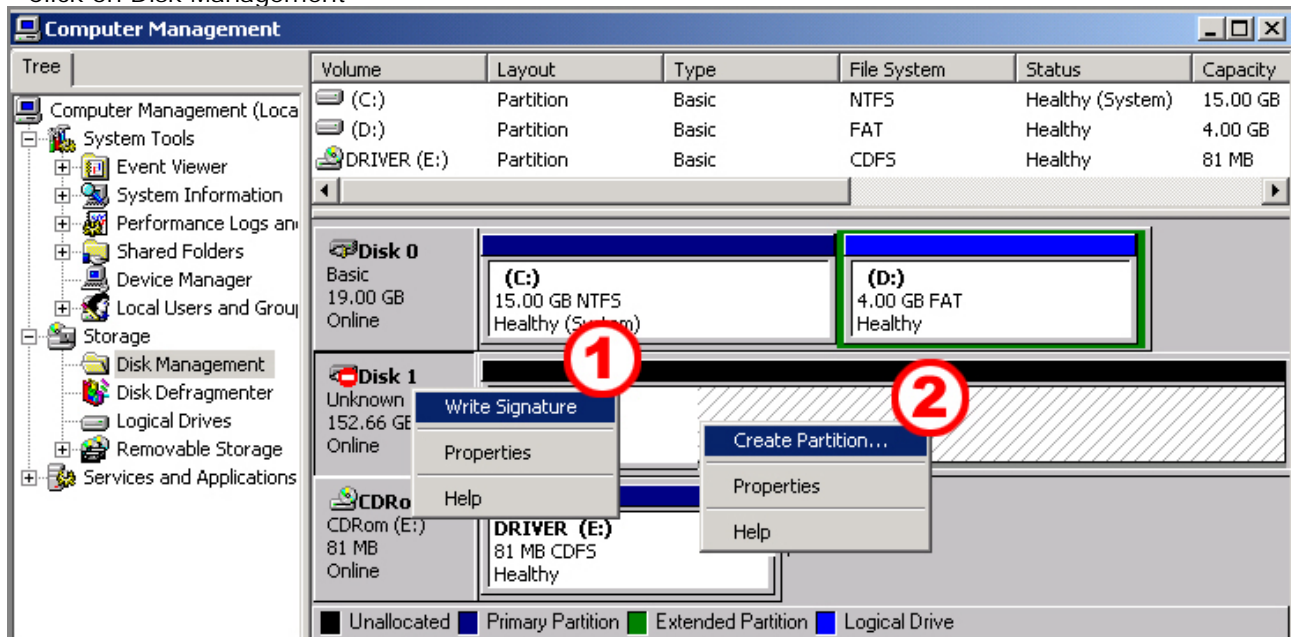


## Windows 2000/XP

### Disk Management

To verify your hard disk was properly detected by your Operating System using Windows Disk Management Utility:

- Right-click on the My Computer icon from your Windows Desktop
- Select Manage
- Click on Storage
- Click on Disk Management



If the drive shows in Disk Management without a partition or with an inactive partition, then the drive isn't formatted. First right-click on the disk to write a signature, then right-click in the partition and choose Format. Then follow the instructions.

## Windows 98/Me

### Drivers

Only for Windows 98 you first need to install the necessary drivers. You can find them on the CD-ROM that's delivered with the hard disk. Once you have installed the drivers, the external hard disk will be recognized.

### Format the hddisk

Now you can create partitions and format the hard disk with the fdisk and the format command :

- At a command prompt, type fdisk, and then press ENTER
- If your hard disk is larger than 512 MB, you receive the following message :

Your computer has a disk larger than 512 MB. This version of Windows includes improved support for large disks, resulting in more efficient use of disk space on large drives, and allowing disks over 2 GB to be formatted as a single drive.

**IMPORTANT:** If you enable large disk support and create any new drives on this disk, you will not be able to access the new drive(s) using other operating systems, including some versions of Windows 95 and Windows NT, as well as earlier versions of Windows and MS-DOS. In addition, disk utilities that were not designated explicitly for the FAT32 file system will not be able to work with this disk. If you need to access this disk with other operating systems or older disk utilities, do not enable large drive support.

Do you wish to enable large disk support?

- Press Y and then press ENTER.

After you've created the partitions, you must format the partitions :

- At a command prompt, type format *drive* where *drive* is the letter of the partition that you want to format, and then press ENTER
- you receive the following message :

WARNING, ALL DATA ON NON-REMOVABLE DISK DRIVE C: WILL BE LOST!  
Proceed with Format?

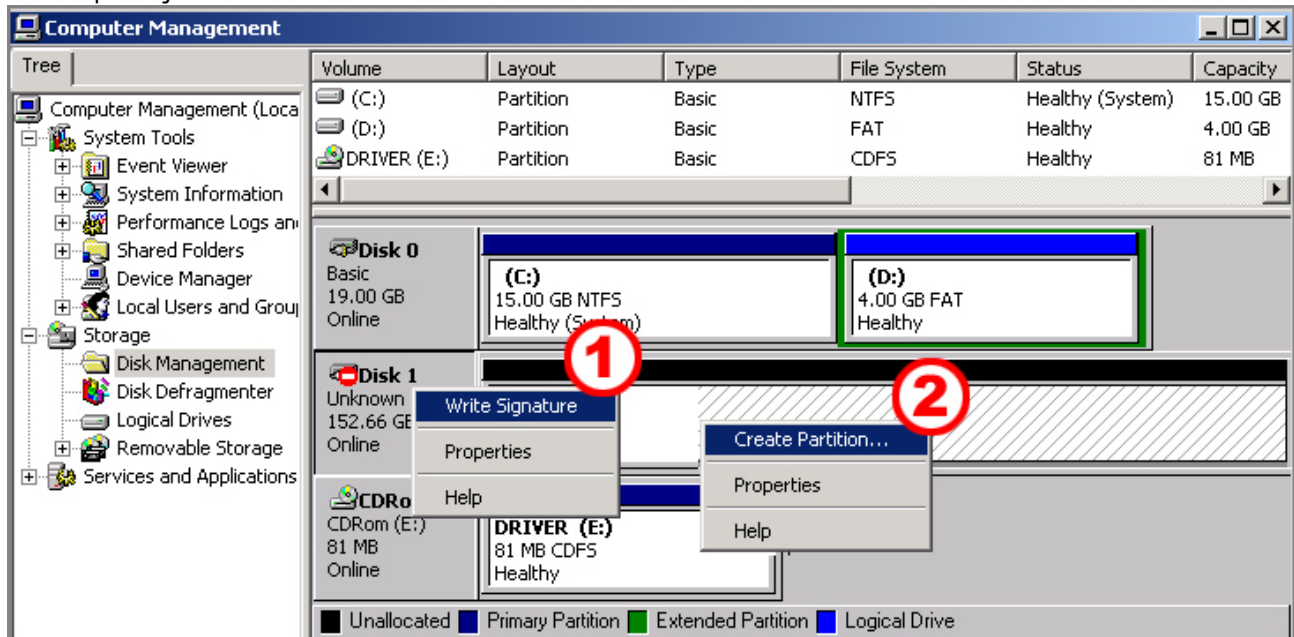
- Press Y and then press ENTER.

## Windows 2000/XP

### Schijfbeheer

Om te controleren of de harde schijf door Windows erkend wordt, opent u de Windows Disk Management Utility:

- Klik met de rechter muisknop op Deze Computer in het bureaublad
- Selecteer Beheer
- Klik op Opslag
- Klik op schijfbeheer



Als de harde schijf ongepartitioneerd of met een inactieve partitie in schijfbeheer staat, moet de harde schijf nog geformatteerd worden. Klik eerst met de rechter muisknop op Schijf 1, klik dan met de rechter muisknop in de partitie en selecteer creëer partitie. Volg vervolgens de instructies.

## Windows 98/Me

### Drivers

Alleen gebruikers van Windows 98 moeten eerst de nodige drivers installeren. Deze staan op de CD-ROM die met de harde schijf is meegeleverd. Eenmaal de drivers geïnstalleerd zijn, wordt de externe harde schijf erkend door Windows.

### De harde schijf formatteren

Nu kunt u de harde schijf in partities indelen en formatteren met de commando's fdisk en format :

- Aan de opdracht regel, typ fdisk in en druk op ENTER
- Als de harde schijf groter is dan 512 MB, krijgt u de volgende boodschap :

Your computer has a disk larger than 512 MB. This version of Windows includes improved support for large disks, resulting in more efficient use of disk space on large drives, and allowing disks over 2 GB to be formatted as a single drive.

IMPORTANT: If you enable large disk support and create any new drives on this disk, you will not be able to access the new drive(s) using other operating systems, including some versions of Windows 95 and Windows NT, as well as earlier versions of Windows and MS-DOS. In addition, disk utilities that were not designated explicitly for the FAT32 file system will not be able to work with this disk. If you need to access this disk with other operating systems or older disk utilities, do not enable large drive support.

Do you wish to enable large disk support?

- Druk op J en dan op ENTER.

Nadat u de partities gemaakt hebt, moet u de harde schijf nog formatteren :

- Aan de opdracht regel, typ format « letter van de partitie » en druk op ENTER
- U krijgt volgende boodschap :

WARNING, ALL DATA ON NON-REMOVABLE DISK DRIVE C: WILL BE LOST!  
Proceed with Format?

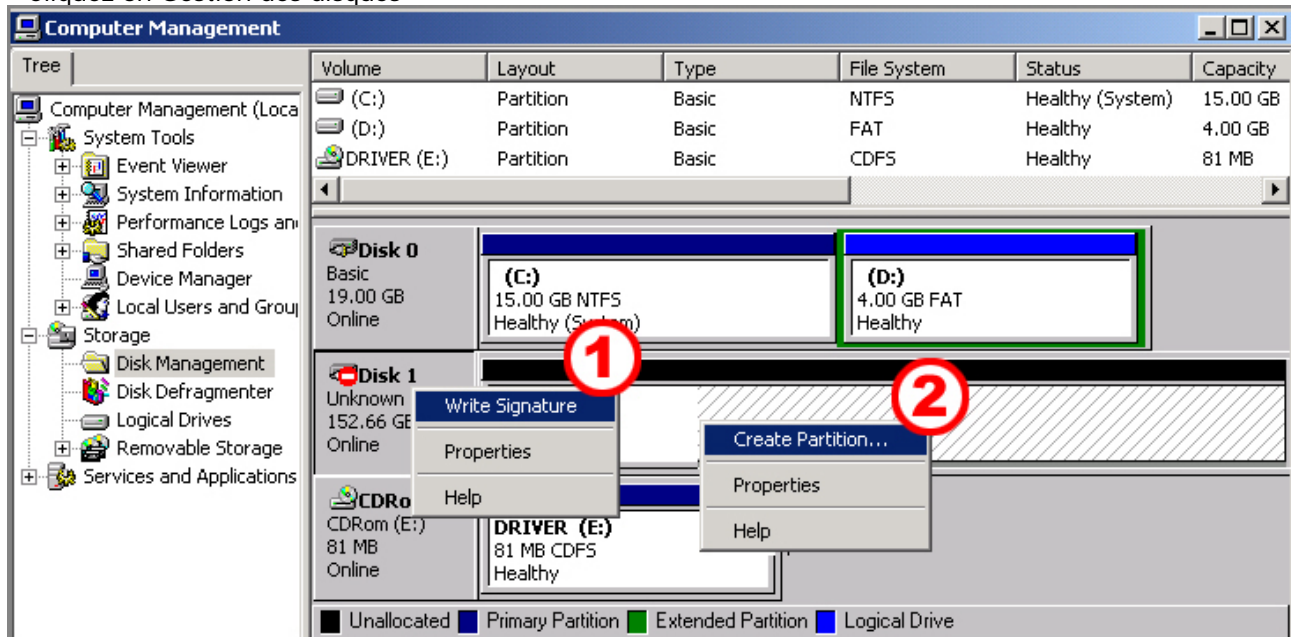
- Druk op J en dan op ENTER.

## Windows 2000/XP

### Management des disques

Vérifiez que votre disque dur est bien détecté par le système en utilisant dans l'utilitaire de gestion des disques de Windows :

- Cliquez bouton droit de la souris sur l'icône du poste de votre bureau en Windows.
- Sélectionner Gérer.
- Cliquez sur Stockage
- Cliquez on Gestion des disques



Si ce disque dur est montré dans le management des disques comme une partition inactive ou non formaté. Cliquez sur le disque dur avec le bouton droit de la souris et choisissez initialiser le disque et puis bouton droit de la souris sur la partie avec les lignes et choisissez Créez une partition puis formater. Après suivez les instructions.

## Windows 98/Me

### Pilotes :

Pour Windows 98, vous avez besoin d'installer des pilotes. Vous les trouverez sur le CD-ROM fourni avec l'appareil. Après installation des pilotes le disque dur externe

### Formater le disque dur

Maintenant vous pouvez créer les partitions et formater le disque dur , pour cela utilisez les commandes DOS FDISK et FORMAT :

- Au prompt C: , tapez FDISK et pressez ENTER
- Si votre disque dur est plus grand que 512Mb vous recevrez cet message:

Your computer has a disk larger than 512 MB. This version of Windows includes improved support for large disks, resulting in more efficient use of disk space on large drives, and allowing disks over 2 GB to be formatted as a single drive.

IMPORTANT: If you enable large disk support and create any new drives on this disk, you will not be able to access the new drive(s) using other operating systems, including some versions of Windows 95 and Windows NT, as well as earlier versions of Windows and MS-DOS. In addition, disk utilities that were not designated explicitly for the FAT32 file system will not be able to work with this disk. If you need to access this disk with other operating systems or older disk utilities, do not enable large drive support.

Do you wish to enable large disk support?

- Appuyer sur O et appuyez sur ENTER.

Après avoir crée les partitions , vous devez les formater :

- Au prompt , tapez FORMAT « lettre de la partition» que vous voulez formater et pressez ENTER
- Vous recevrez le message suivant:

WARNING, ALL DATA ON NON-REMOVABLE DISK DRIVE C: WILL BE LOST!  
Proceed with Format?

- Pressez O et alors pressez ENTER.